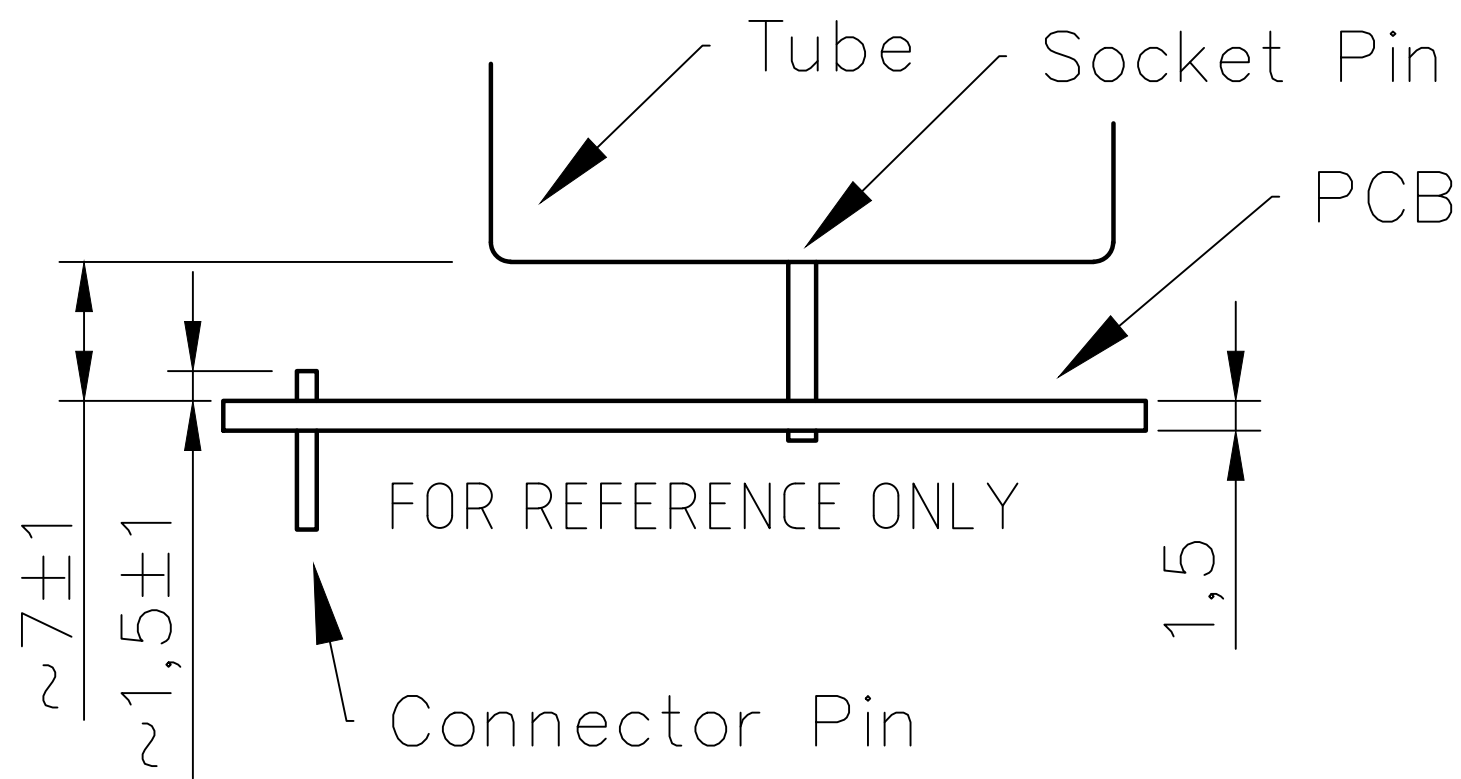


RevNo	Revision note	Date	Signature	Checked



This drawing shows the tube board with a mounted tube.
 The top of the case is about 5mm thick.

FILE NAME	Z5660M_2.dwg	FSCM NO	SHEET	SCALE
SIZE			1	4:1
DRAWN	4/1/2016			
CHECK				
APPR.				SWISSNIXIE.COM
ISSUED				
REV	1.00		DWG NO	
CONTRACT NO				TUBE BOARD MECH.