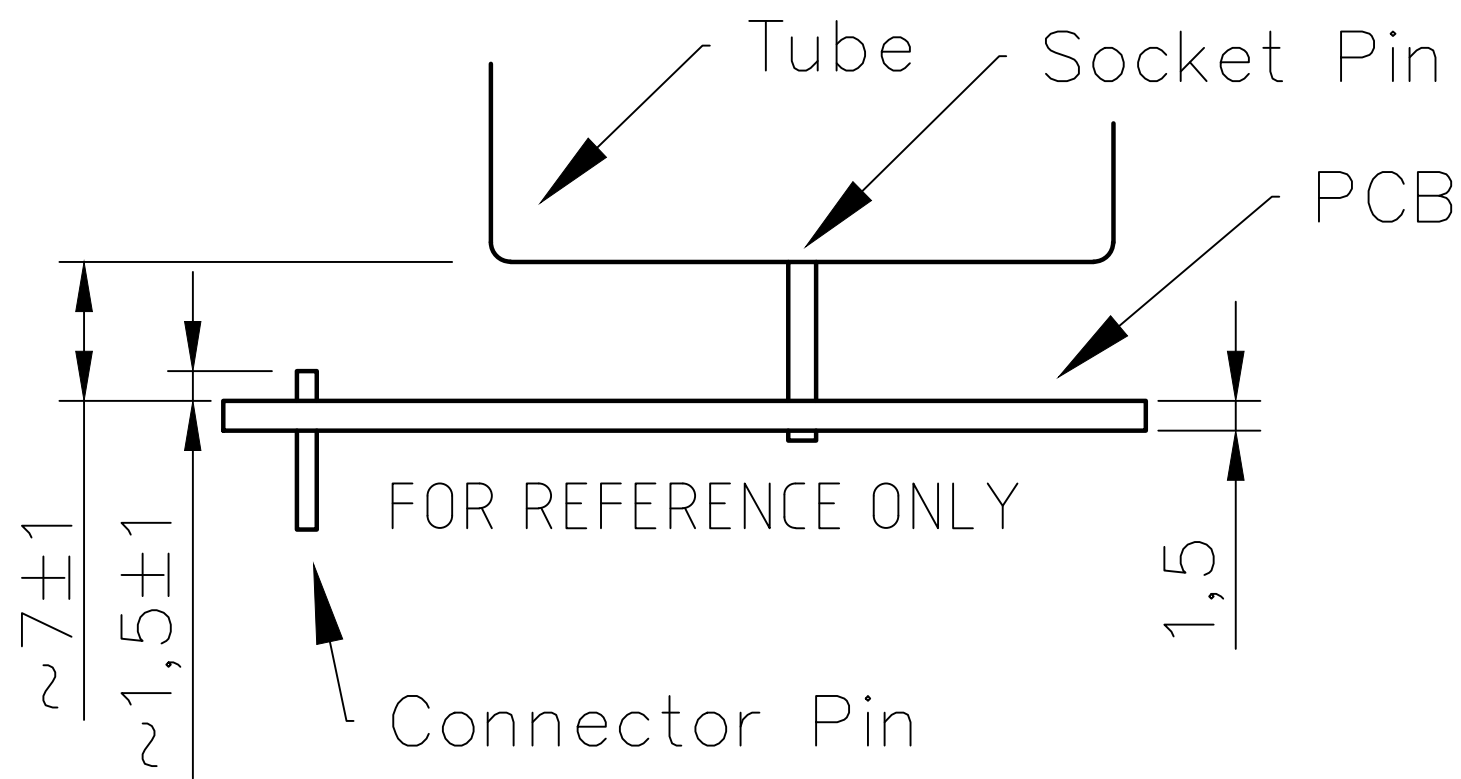


RevNo	Revision note	Date	Signature	Checked



This drawing shows the tube board with a mounted tube.
 The top of the case is about 5mm thick.

FILE NAME	Z5660M_2.dwg	FSCM NO	SHEET	1	SCALE	4:1	
SIZE						SWISSNIXIE.COM	
DRAWN	4/1/2016						
CHECK							
APPR.							
ISSUED							
REV	1.00					DWG NO	TUBE BOARD MECH.
CONTRACT NO							